

On·Call[®] MultiPro System

ACR Test

Simple and
Reliable Measurement



- Immunoturbidimetric and Enzyme Method
- Accurate Results in 6.5 Minutes
- 3-Step Operation
- 5 μ L Urine Sample

Albumin-to-Creatinine Ratio (ACR) --A key marker for chronic kidney disease

CKD (Chronic Kidney Disease) is typically a progressive disease. It is defined as:

Reduction of kidney function— an eGFR < 60 mL/min/1.73 m² for > 3 months

AND/OR

Evidence of kidney damage, including persistent albuminuria— ACR \geq 30 mg/g for > 3 months

Albuminuria is increased excretion of urinary albumin.

Usually reflects damage to the glomerulus—the “filter” of the nephron

Is an independent risk factor for CKD progression

Is considered a marker for CVD and mortality in hypertension

ACR is urine albumin-to-creatinine ratio. It is the preferred method for detecting elevated protein in urine.

Albuminuria Categories in CKD		
Category	ACR(mg/g)	Terms
A1	<30	Normal to mildly increased
A2	30-300	Moderately increased*
A3	>300	Severely increased**

*Relative to young adult level. ACR 30-300 mg/g for > 3 months indicates CKD.
**Including nephrotic syndrome (albumin excretion ACR > 2220 mg/g)

ACR Testing for the Diagnosis and Monitoring of CKD Progression

- ✓ Preferred test for screening, assessing, and monitoring kidney damage
- ✓ Unaffected by variation in urine concentration (unlike a dipstick test for urine albumin)
- ✓ Result (mg/g) approximates milligrams of albumin excreted in 24 hours
- ✓ May be the earliest sign of glomerular diseases including diabetic kidney disease

Regular ACR Testing for Diabetic Patients

The International Diabetes Federation (IDF) and the American Diabetes Association (ADA) recommend performing an annual test to assess urine albumin excretion in diabetic patients. An ACR test is the preferred method.

Diabetes	ACR Test
Type 1	Begin screening 5 years after diagnosis, then annually
Type 2	Begin screening at diagnosis, then annually

References:

[1] American National Kidney Foundation

[2] Making Sense of CKD-A Concise Guide for Managing Chronic Kidney Disease in the Primary Care Setting-National Kidney Disease Education Program

[3] American Diabetes Association. *Diabetes Care*. 2020;43(Suppl. 1):S135-S151.

[4] IDF Clinical Practice Recommendations for Managing Type 2 Diabetes in Primary Care - 2017. ISBN: 978-2-930229-85-0.

Advanced Features for Healthcare Providers

Fast and Simple Test Procedure

Only 6.5 minutes for an ACR result

Cable and Wireless Connectivity

Suitable for small and large facilities

User-friendly Interface

Easily navigate workflow

Efficient Workflow

Minimal hands-on time



7-inch Touch Screen

Large touch screen for easy operation

Multi-assay System

Test for HbA1c, ACR and CRP on one analyzer



★ Small Sample Volume

Just 5 μ L urine sample per ACR test

★ Room Temperature Storage of ACR Test Cartridge

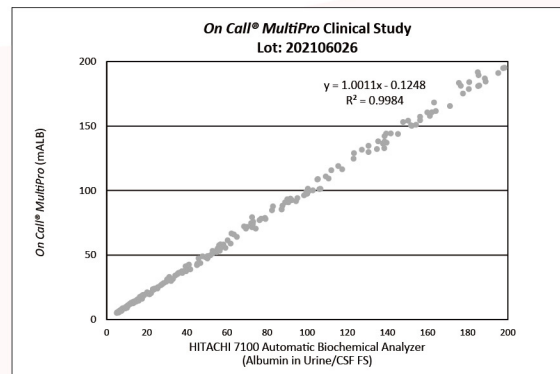
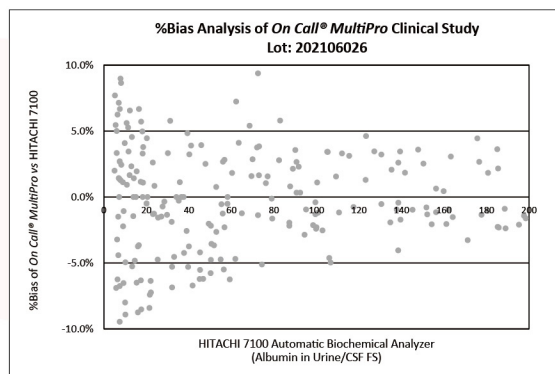
2-30°C (36-86°F): 24-month shelf life

★ Accurate and Reliable Results with Immunoturbidimetric and Enzyme Method

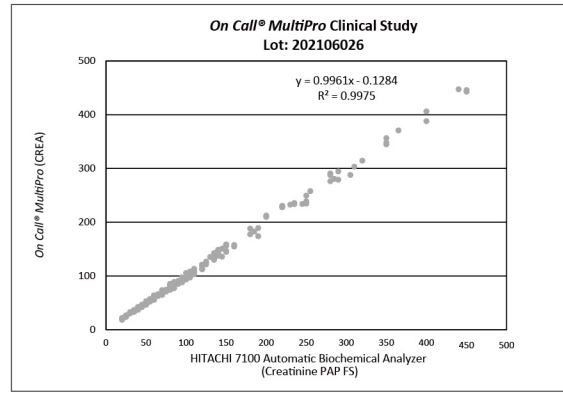
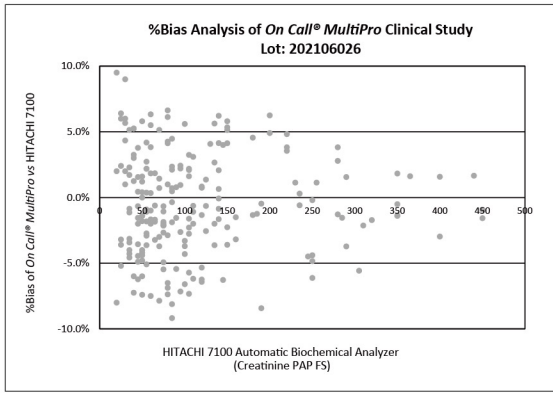
Accuracy of the system proven by extensive clinical studies

Accurate and Reliable Results

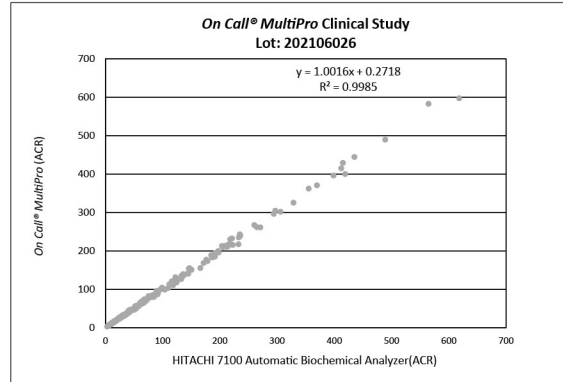
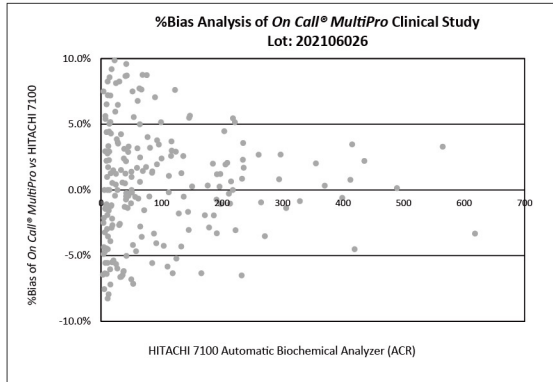
Urine Albumin Test



Urine Creatinine Test



Urine ACR Test



Cartridge Lot	202106026
%Bias vs. Reference	≤±10%
Counting Percentage/%	212/212 100%

Specifications (for ACR Test Kit)

Feature	Specifications
Methodology	Turbidimetric immunoassay and enzyme method
Test time	6.5 minutes
Specimen	5 µL human urine
Test Range	Albumin: 5 to 200 mg/L Creatinine: 15 to 500 mg/dL (1.3 to 44.2 mmol/L) Albumin-to Creatinine Ratio: 1 to 1333 mg/g (0.1 to 152.4 mg/mmol)
Operating Conditions	15 - 32°C; 10%-90% RH
Storage Conditions	2-30°C; 10%-90% RH
Shelf life	24 months

Catalog

Product Name	Catalog No.	Contents
On Call® MultiPro Analyzer	G116-112-101	*1 Analyzer *Printer Paper Rolls *Power Cord *Power Supply Adapter *Quick Reference Guide *User's Manual
On Call® MultiPro Analyzer (with Barcode Reader)	G116-122-101	*1 Analyzer *Printer Paper Rolls *Power Cord *Power Supply Adapter *Quick Reference Guide *User's Manual *Barcode Reader
On Call® MultiPro ACR Test Kit	G136-132	*10 Test Cartridge (with Capillary Devices) *1 Extra Capillary Device *Package Insert
On Call® MultiPro ACR Controls	G126-182	*Control Level 1 *Control Level 2 *Control ID Cartridge *Reconstitution Solution *White Dropper Cap *Black Dropper Cap *Package Insert
On Call® MultiPro Printer Paper Rolls	G126-132-101	*4 Rolls/Kit
On Call® MultiPro Barcode Reader	G126-142-101	*1 Reader *1 Barcode Reader Power Cord
On Call® MultiPro Data Transfer Cable (RS232)	G126-152-101	*1 Cable *1 Package Insert
On Call® MultiPro Data Transfer Cable (USB)	G126-152-102	*1 Cable *1 Package Insert



ACON Laboratories, Inc., 5850 Oberlin Drive, #340, San Diego, CA 92121, U.S.A. Tel: 1-858-875-8000 Fax: 1-858-200-0729 E-mail: info@aconlabs.com

Please visit our website for details: www.acondiabetescare.com