



Hb Hemoglobin Data Transfer Software User's Guide

For data transfer to a Personal Computer (PC).
For professional in vitro diagnostic use only.

INTENDED USE

These instructions define the format and timing for data transmission from the Hb Hemoglobin Meter. Data available from the meter includes test number, date, time, and test results. The intended use is to provide information required to transfer data to an external computer with suitable PC software.

MATERIALS

Materials Provided

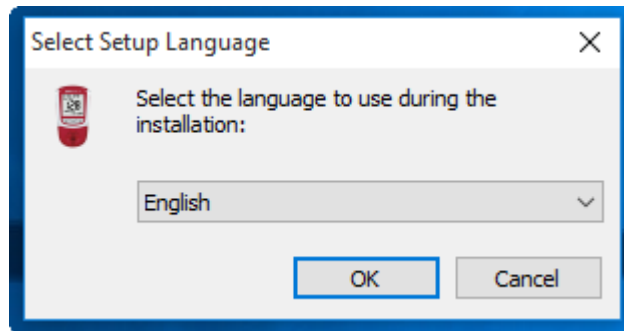
- | | |
|--------------------------|---|
| • Data Transfer Software | • Instructions for Installation and Use |
|--------------------------|---|

Materials Required But Not Provided

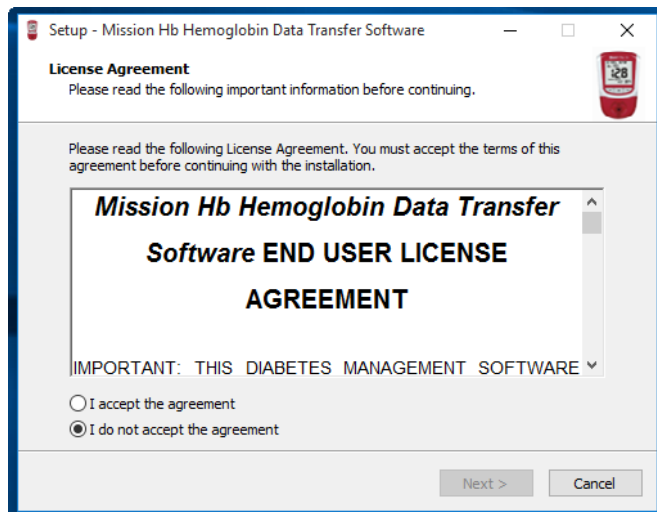
- | | |
|--------------------------------|-------------|
| • Hb Hemoglobin Testing System | • USB Cable |
|--------------------------------|-------------|

DIRECTIONS FOR USE

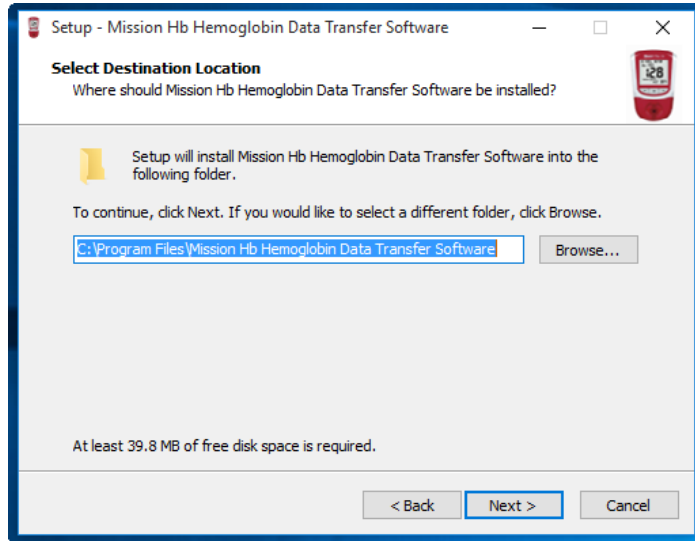
1. Double click "Mission Hb Hemoglobin Data Transfer Software Version" to start the installation. Make sure the Hb meter is not connected to the PC with a USB cable before installing the software.
2. The Setup Wizard will display as shown below. Select setup language and click **OK**.



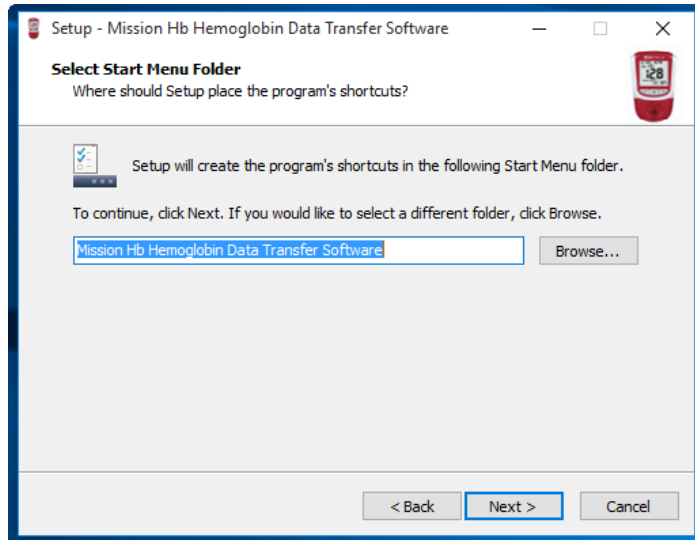
3. The License Agreement will display as shown below. If you agree with the terms, select the "I accept the agreement" option and click **Next>**.



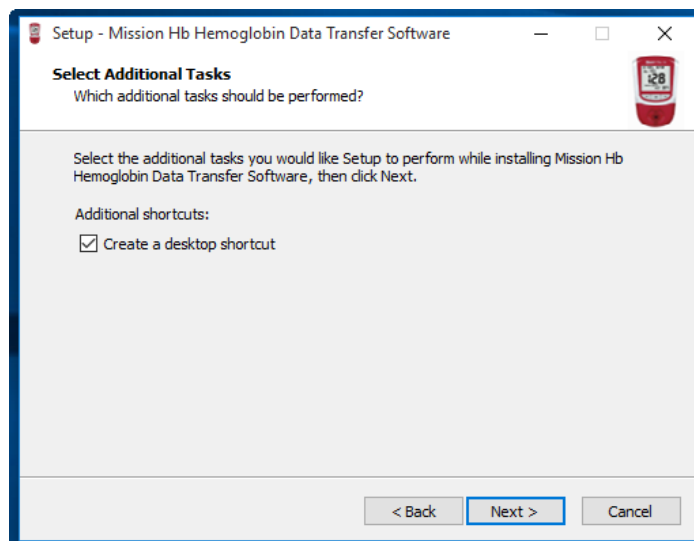
4. The Destination Location will display as shown below. Select the destination you prefer and Click **Next>**.



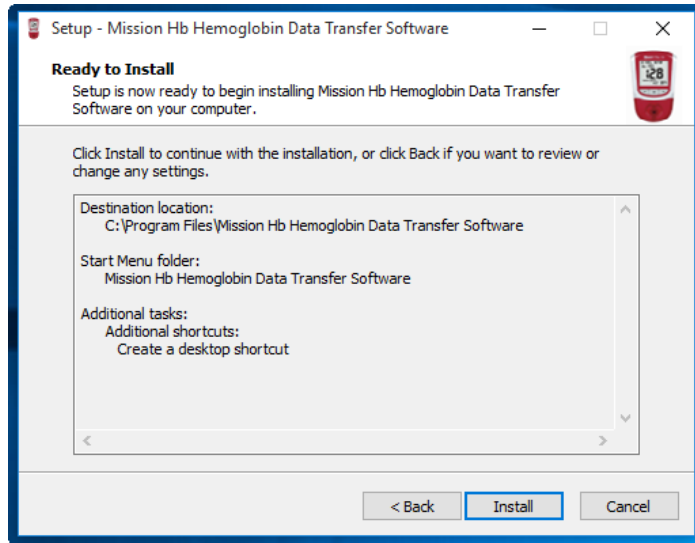
5. Select Start Menu Folder screen will display as shown below. The default folder is “Mission HB Hemoglobin Data Transfer Software”. It is recommended that default settings not be changed. Click **Next>**.



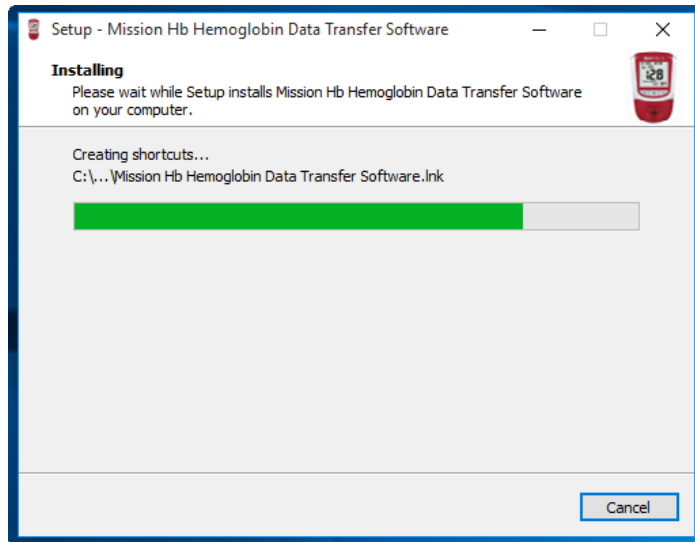
6. Select **create a desktop icon**, then Click **Next>**.



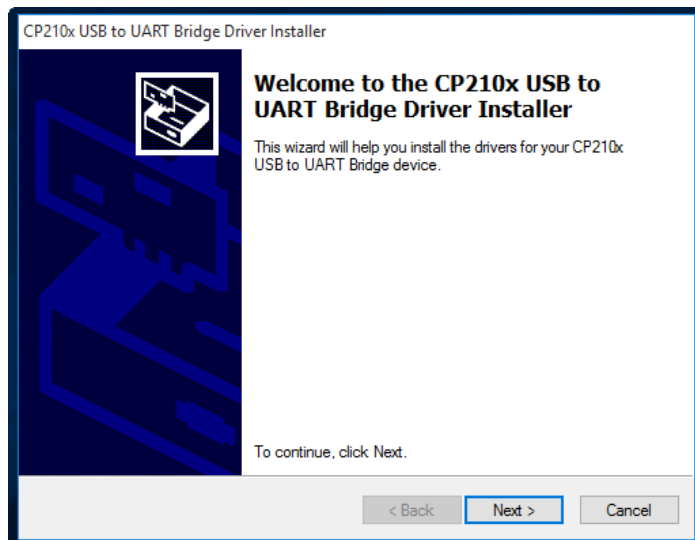
7. Before the files are installed, the screen shown below will be displayed. Click **Install** to continue with the installation process. Click **<Back** to modify or review any of the installation settings.



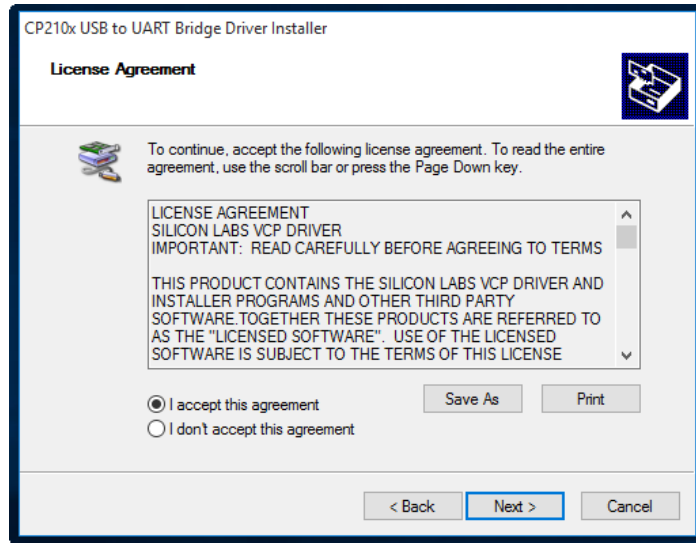
8. The following screen will be displayed, showing the progress of the installation.



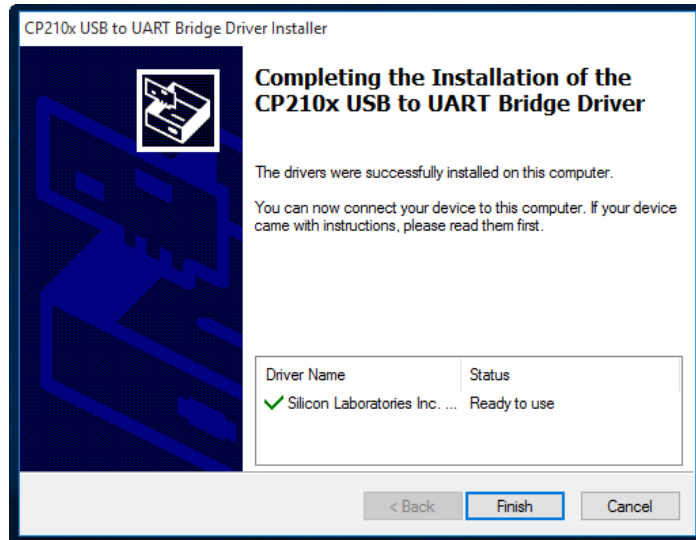
9. Make sure the Hb meter is not connected to the computer and start to install the USB to COM driver. Click **Next>**.



10. The License Agreement will display as shown below. If you agree with the terms, select the "I accept the agreement" option and click **Next>**.



11. The driver will be installed and click **Finish**.

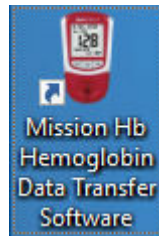


12. Click **Finish** to complete the Setup Wizard.

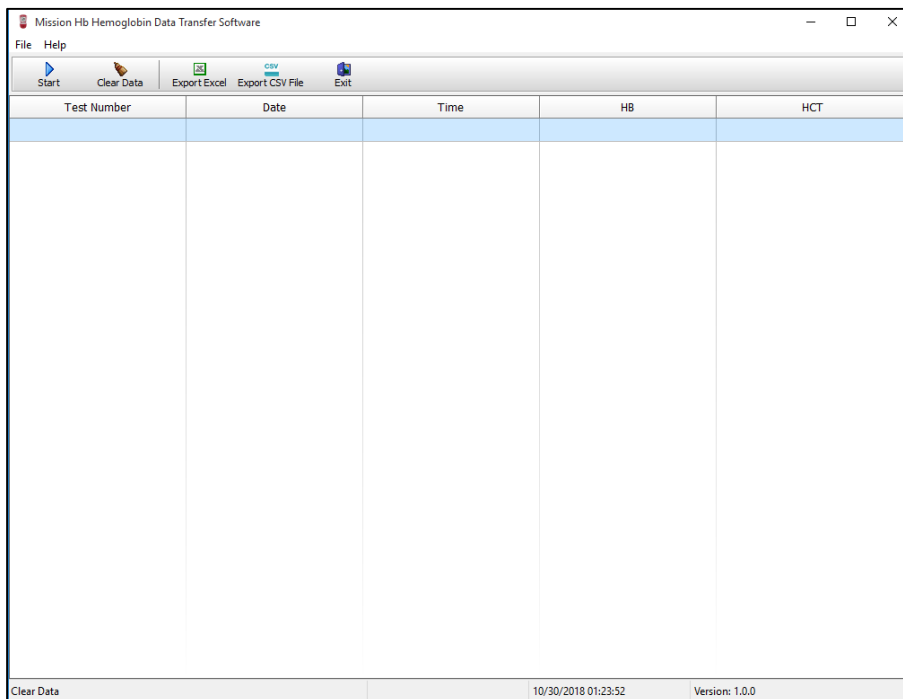


Data Transfer Software Startup

1. Select "Mission HB Hemoglobin Data Transfer Software" from Program List to run the software, or double click the following icon on the desktop if "create a desktop icon" was selected during the installation.



2. The Data Transfer screen will be displayed as shown below.



Download Hb Meter Data

1. Run the software.
2. Use a USB cable to connect the Hb Hemoglobin Meter to a PC.
3. Turn on the Hb Hemoglobin Meter by holding the center button down for 4 seconds until the **Set** screen appears.
4. Press the right button until **PC** is displayed on the screen. Press the center button once.
5. Press the **“Start”** button on your computer screen.
6. Press the center button on the meter one more time.
7. An example of records transferred to the PC are shown below:

The screenshot shows the software window with a menu bar (File, Help) and a toolbar (Stop, Clear Data, Export Excel, Export CSV File, Exit). The main area contains a table with the following data:

Test Number	Date	Time	HB(g/dL)	HCT(%)
20	1/2/2010	08:21	Low	
21	1/2/2010	08:22	Low	
22	1/2/2010	08:23	Low	
23	1/2/2010	08:24	4.5	
24	1/2/2010	08:26	4.5	
25	1/2/2010	08:27	4.5	
26	1/2/2010	08:28	4.5	
27	1/2/2010	08:29	4.6	
28	1/2/2010	08:30	4.6	
29	1/2/2010	08:31	4.6	
30	1/2/2010	08:32	4.6	
31	1/2/2010	08:33	4.6	
32	1/2/2010	08:34	4.7	
33	1/2/2010	08:35	4.7	
34	1/2/2010	08:36	4.7	
35	1/2/2010	08:37	4.7	
36	1/2/2010	08:39	4.8	
37	1/2/2010	08:40	4.8	
38	1/2/2010	08:41	4.8	
39	1/2/2010	08:42	4.8	
40	1/2/2010	08:43	4.8	
41	1/2/2010	08:44	4.9	
42	1/2/2010	08:45	4.9	

At the bottom of the window, the status bar shows: Processing 42/42, COM 3, 11/1/2018 00:58:52, Version: 1.0.0

8. Data transferring will not stop until all the records are copied to the software window. The record quantity and the time of transfer will be shown in the lower left corner of the software interface.

The screenshot shows the software window with a menu bar (File, Help) and a toolbar (Stop, Clear Data, Export Excel, Export CSV File, Exit). The main area contains a table with the following data:

Test Number	Date	Time	HB(g/dL)	HCT(%)
973	1/3/2010	01:34	25.6	
974	1/3/2010	01:35	25.6	
975	1/3/2010	01:36	25.6	
976	1/3/2010	01:37	25.6	
977	1/3/2010	01:38	High	
978	1/3/2010	01:39	High	
979	1/3/2010	01:40	High	
980	1/3/2010	01:41	High	
981	1/3/2010	01:42	High	
982	1/3/2010	01:43	High	
983	1/3/2010	01:44	High	
984	1/3/2010	01:46	High	
985	1/3/2010	01:47	High	
986	1/3/2010	01:48	High	
987	1/3/2010	01:49	High	
988	1/3/2010	01:50	High	
989	1/3/2010	01:51	High	
990	1/3/2010	01:52	High	
991	1/3/2010	01:53	High	
992	1/3/2010	01:54	High	
993	1/3/2010	01:55	High	
994	1/3/2010	01:56	High	
995	1/3/2010	01:57	High	

At the bottom of the window, the status bar shows: Received 995 records., COM 3, 11/1/2018 00:53:48, Version: 1.0.0

9. Press "**Export Excel**" to export all the data shown on the window of the software program to an excel file and save it. Alternatively, export the data to a CSV file by pressing "Export CSV File" and save the file.

10. Turn off the Hb Hemoglobin meter, then press "**Stop**" to end the current data transfer. **Note: Removing the USB cable from the Hb meter will end the current data transfer automatically.**
Press "**Clear Data**" to clear the data on the window.

